

PROPOSED BOUNDARY MAP
CREEKVIEW
 COMMUNITIES FACILITIES DISTRICT NO. 2
 AND FUTURE ANNEXATION AREA
 (PUBLIC SERVICES)

CITY OF ROSEVILLE • PLACER COUNTY • CALIFORNIA
 BEING A PORTION OF SECTION 14, T.11 N., R.5 E., M.D.M.

CITY CLERK'S MAP FILING STATEMENT

FILED IN THE OFFICE OF THE CITY CLERK OF THE CITY OF ROSEVILLE, COUNTY OF PLACER, STATE OF CALIFORNIA THIS 3 DAY OF June, 2020.

Sonia Orozco
 SONIA OROZCO, CITY CLERK
 CITY OF ROSEVILLE
 PLACER COUNTY, CALIFORNIA

CITY CLERK'S MAP STATEMENT

I HEREBY CERTIFY THAT THE WITHIN MAP SHOWING THE PROPOSED BOUNDARIES OF CREEKVIEW COMMUNITY FACILITIES DISTRICT NO. 2 AND FUTURE ANNEXATION AREA (PUBLIC FACILITIES), CITY OF ROSEVILLE, COUNTY OF PLACER, STATE OF CALIFORNIA, WAS APPROVED BY THE CITY COUNCIL OF THE CITY OF ROSEVILLE, AT A REGULAR MEETING THEREOF, HELD ON THE 3 DAY OF June, 2020 BY ITS RESOLUTION NO. 20-204

Sonia Orozco
 SONIA OROZCO, CITY CLERK
 CITY OF ROSEVILLE
 PLACER COUNTY, CALIFORNIA

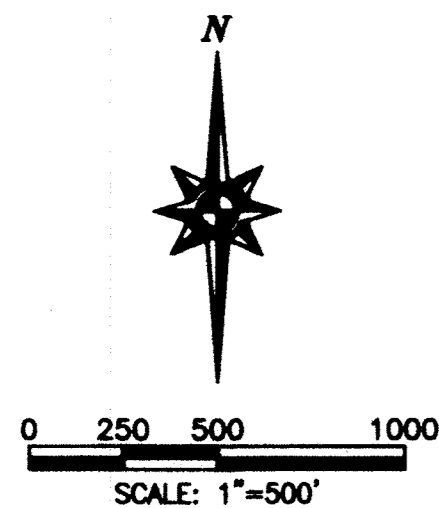
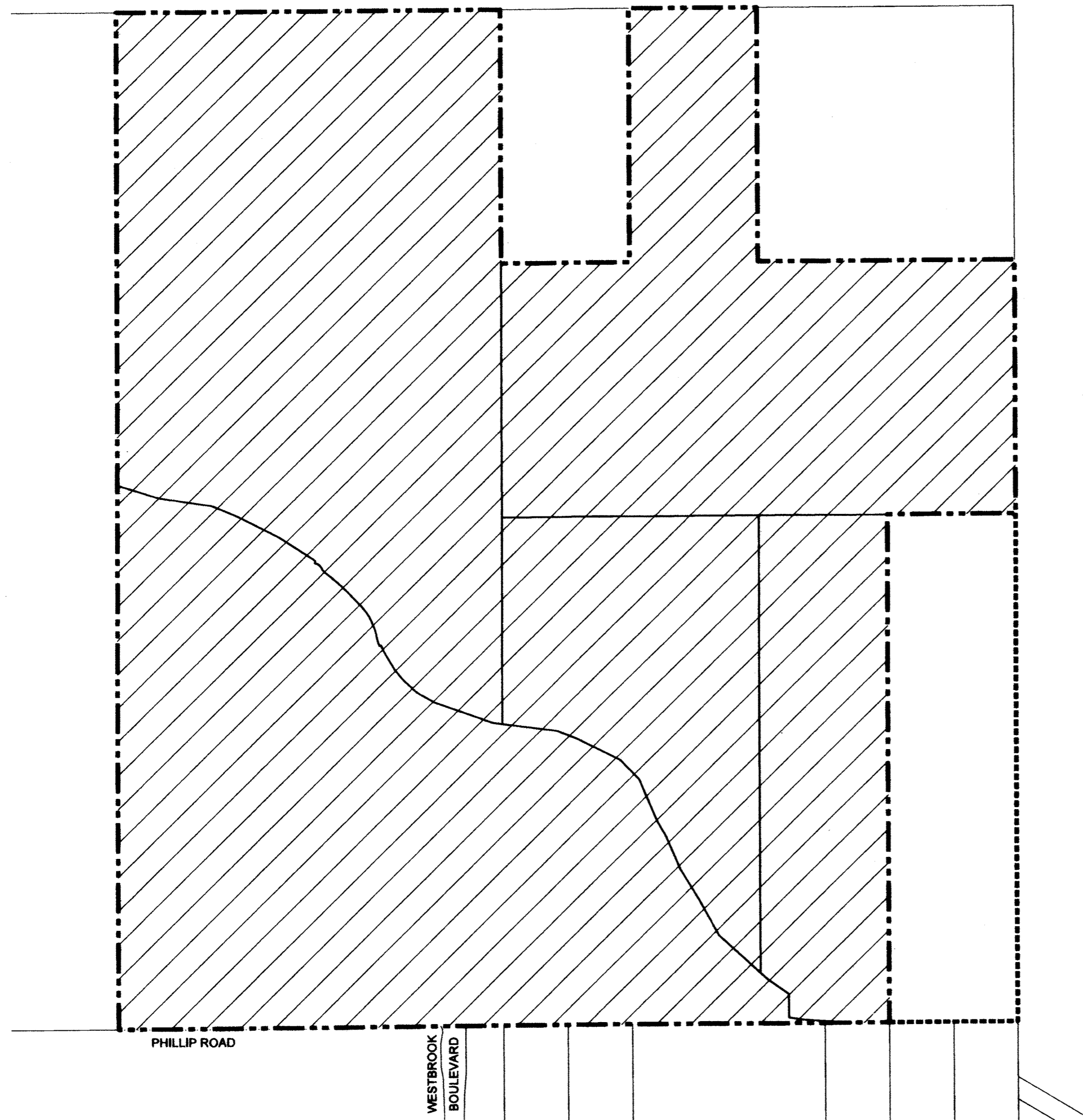
RECORDER'S STATEMENT

FILED THIS 19 DAY OF June, 2020, AT THE HOUR OF 11:15 O'CLOCK A.M. IN BOOK 3 OF MAPS OF COMMUNITY FACILITIES DISTRICT, AT PAGE 96 IN THE OFFICE OF THE COUNTY RECORDER OF THE COUNTY OF PLACER, STATE OF CALIFORNIA.

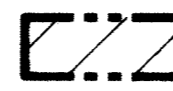
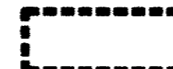
DOCUMENT NO. 2020-0040353

FEE: \$8.00

BY: *Ryan Ronco*
 RYAN RONCO
 COUNTY RECORDER
 COUNTY OF PLACER
 D. Butcher, DEPUTY



LEGEND

-  PROPOSED BOUNDARY OF CFD NO. 2
-  AREAS OF FUTURE ANNEXATION

MACKAY & SONPS
 ENGINEERS PLANNERS SURVEYORS
 1025 Creekside Ridge Drive, Suite 150, Roseville, CA 95678 (916) 773-1189

MAY 2020
 SHEET 1 OF 1 18431.CFD